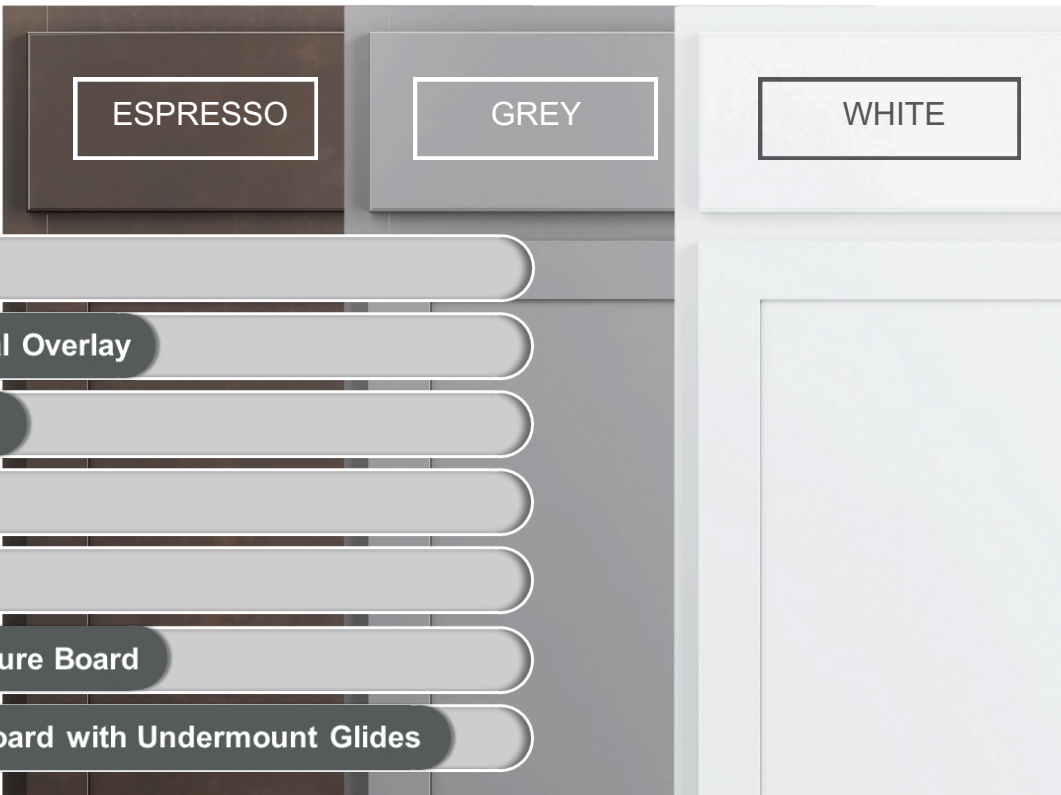


ESSENTIALS

CABINETS BY  INTERIOR
LOGIC GROUP



FEATURES & BENEFITS



AFFORDABLE

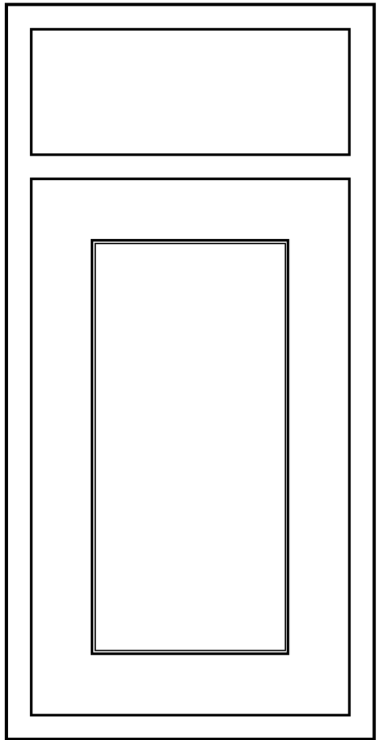


SLEEK DESIGN

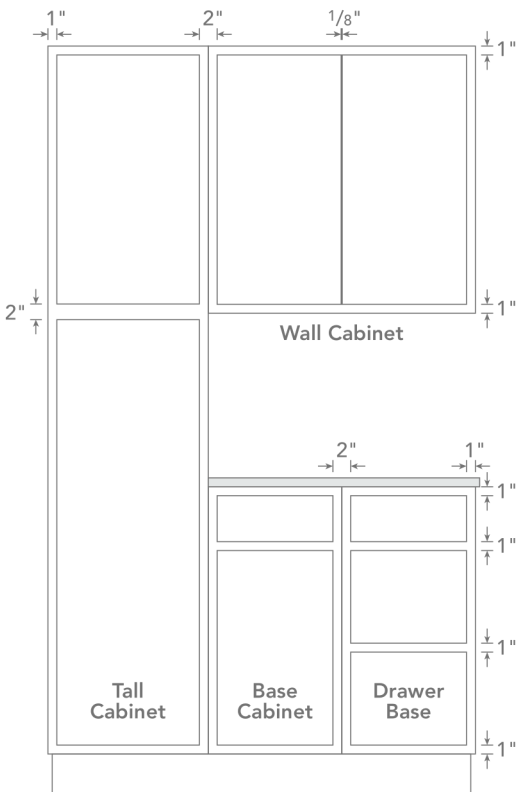


QUALITY MATERIALS

OVERLAY SPECIFICATIONS

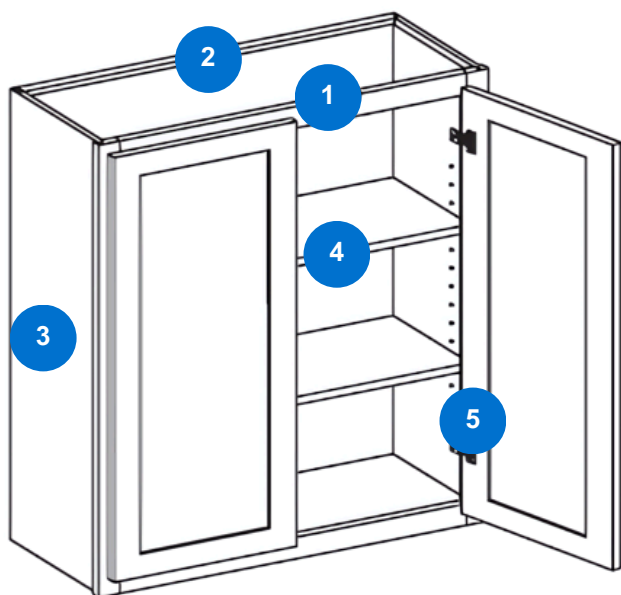


- Available in Partial Overlay
- Butt doors shown on Wall Cabinets
- For Wall and Base cabinets 42", 45", and 48" wide, Partial Overlay doors will have visible mullion.



GENERAL CONSTRUCTION

Wall Cabinets



1. **Frame:** 3/4" thick, 1-1/2" wide, kiln-dried solid hardwood creates a durable foundation

2. **Back Panel:** 1/2" furniture board

3. **End Panel:** 1/2" furniture board. Finished exterior with a woodgrain, melamine laminate interior to minimize the impact of spills or condensation.

4. **Shelves:** 3/4" thick furniture board creates a fully adjustable solution.
Wall: 10" deep **Base:** 18" deep

5. **Hinges*:** Concealed adjustable hinges (*Soft close door hinges available*)

6. **Drawers:** 5/8" furniture board with captured bottom and maple melamine for consistent and clean look and feel.

7. **Epoxy undermount glides:** roll smoothly and are more reliable.

8. **Toekick:** 4-1/2" toekick with 2-1/2" inset on all base and vanity cabinets.

NOTE:

* 36" and 42" Wall cabinets will have 3 hinges. All other Wall cabinets standard with 2 hinges.

** 42", 45", and 48" wide Wall and Base cabinets have full depth shelves.

Base Cabinets

