

PROGRAM OVERVIEW:

2 Paints, 1 Stain

Door Style: Shaker with Partial Overlay

Soft Close Doors *(optional)*

Drawer Front: Solid Slab

3/4" Adjustable Shelving

Box Construction: 1/2" Furniture Board

Drawer Box: 5/8" Furniture Board with Undermount Glides

Up to 25% Cost Savings

ESPRESSO

GREY

WHITE

AFFORDABLE
PRICE POINT

SLEEK
DESIGN

QUALITY
MATERIALS



DOUBLE REINFORCED BOX CONSTRUCTION

Boxes are glued and stapled to provide lasting strength with fewer service calls.



SOFT CLOSE DOORS

Soft close hinges deliver quiet convenience and protect cabinets from everyday wear.



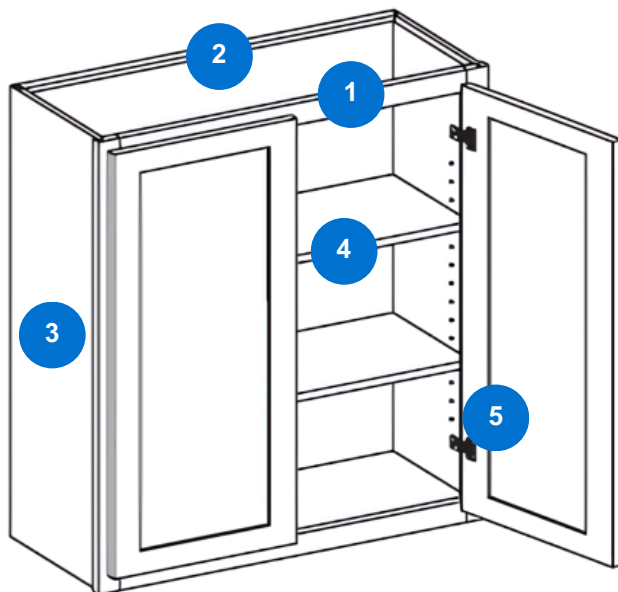
UNDERMOUNT GLIDES

Undermount glides deliver smooth, reliable performance to reduce service calls.

Contact Us

www.InteriorLogicGroup.com/Essentials
Marketing@ilginc.com

Wall Cabinets



1. **Frame:** 3/4" thick, 1-1/2" wide, kiln-dried solid hardwood creates a durable foundation

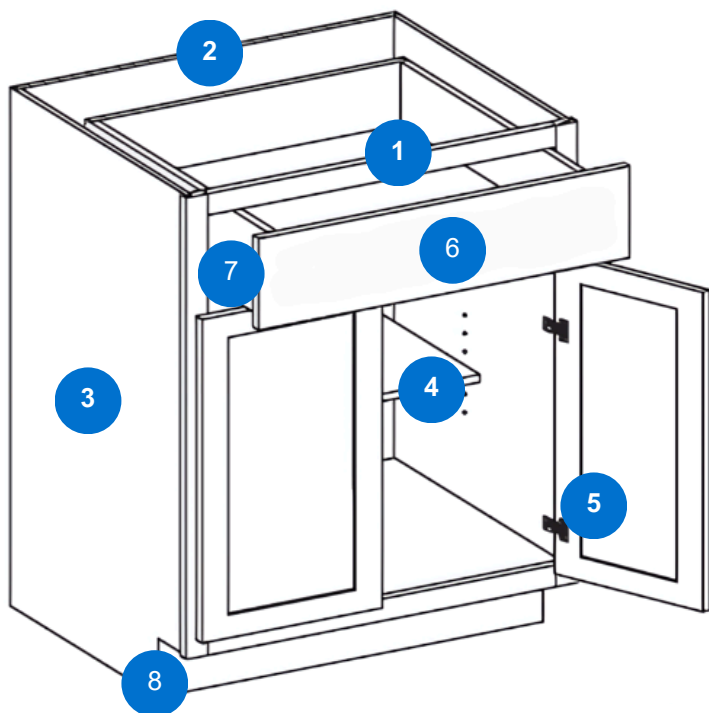
2. **Back Panel:** 1/2" furniture board

3. **End Panel:** 1/2" furniture board. Finished exterior with a woodgrain, melamine laminate interior to minimize the impact of spills or condensation.

4. **Shelves:** 3/4" thick furniture board create a fully adjustable solution.

Wall: 10" deep **Base:** 18" deep

Base Cabinets



5. **Hinges:** Concealed adjustable hinges (*Soft close door hinges available*)

6. **Drawers:** 5/8" furniture board with captured bottom and maple melamine for consistent and clean look and feel.

7. **Epoxy undermount glides:** roll smoothly and are more reliable.

8. **Toekick:** 4-1/2" toekick with 2-1/2" inset on all base and vanity cabinets.

Case construction is shown as partial overlay.